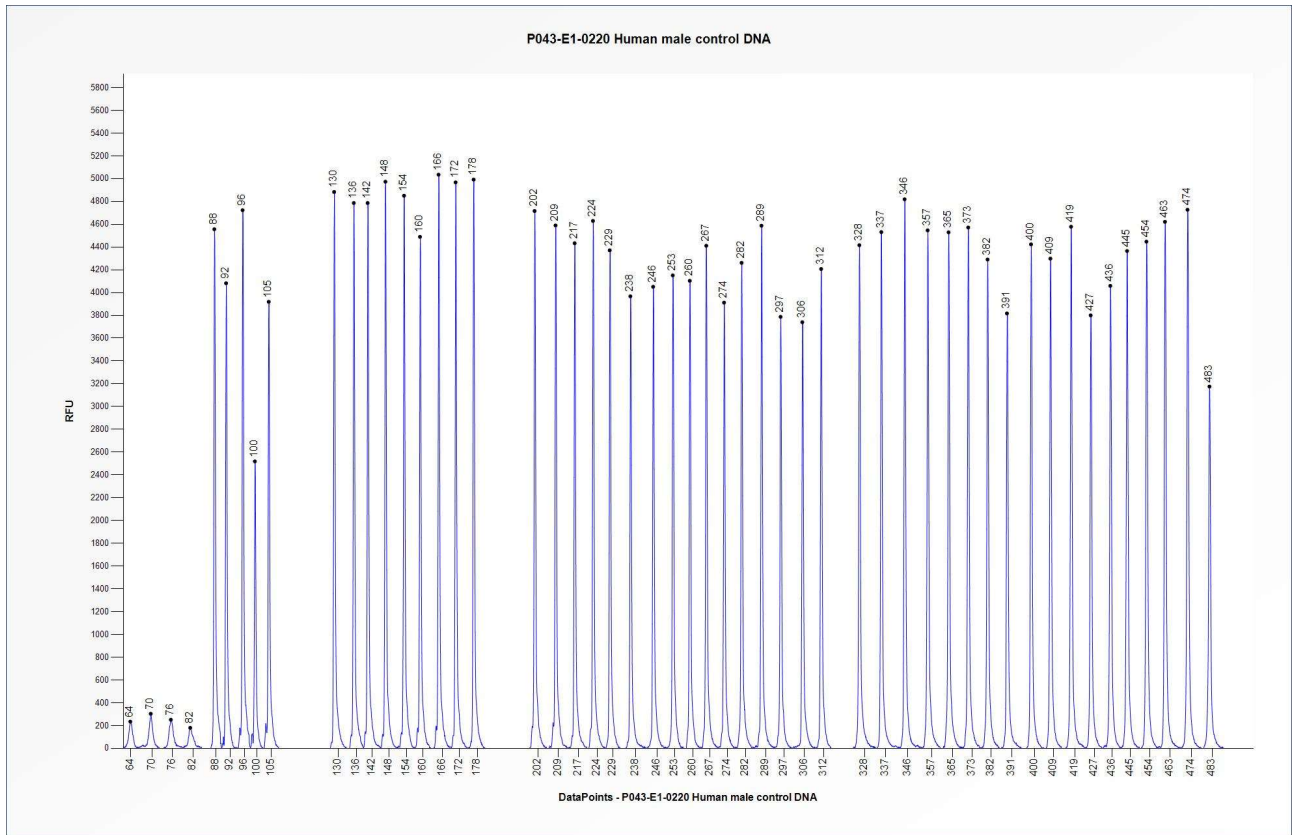


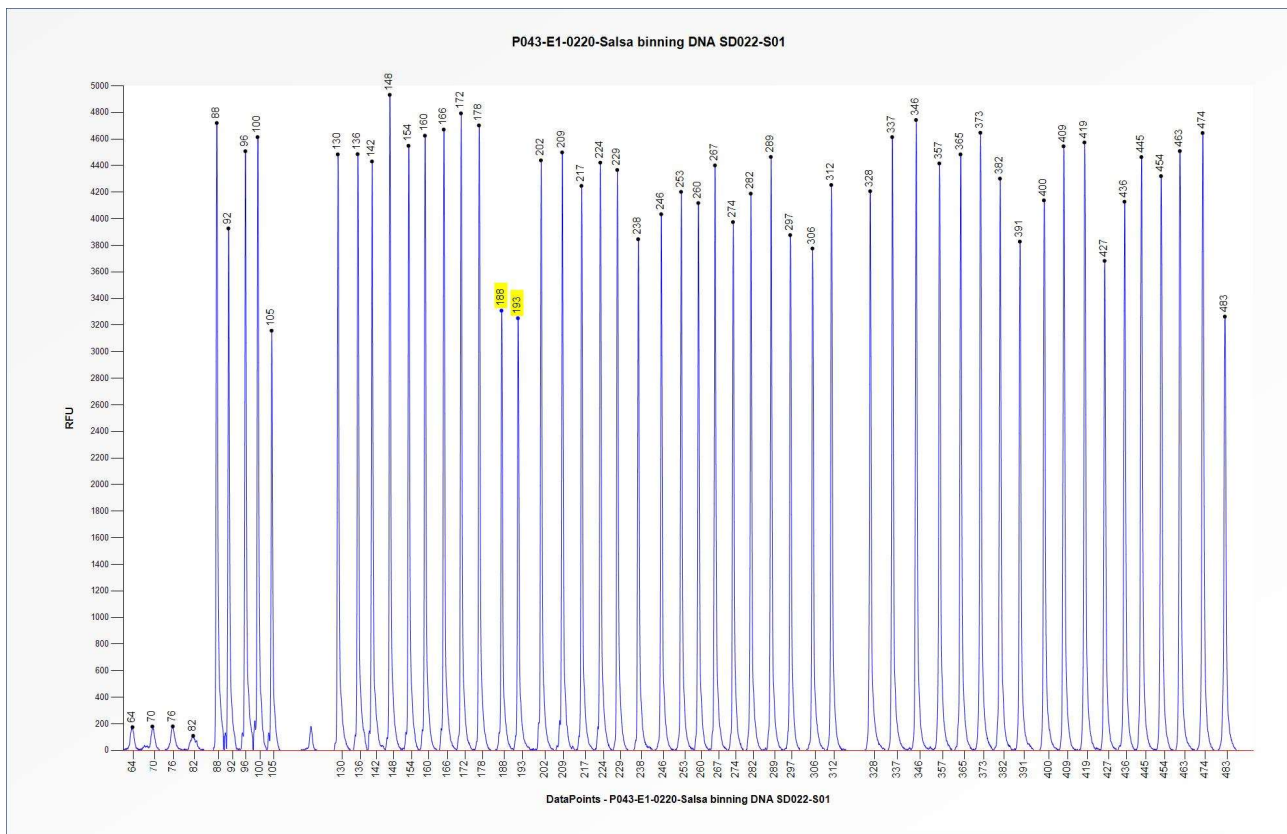


# Certificate of Analysis

## SALSA MLPA Probemix P043-E1 APC sample pictures



**Figure 1.** Capillary electrophoresis pattern from a sample of approximately 50 ng human male control DNA analysed with SALSA MLPA Probemix P043 APC (E1-0220).



**Figure 2.** Capillary electrophoresis pattern from SALSA Binning DNA SD022-S01 (approximately 50 ng) analysed with SALSA MLPA Probemix P043 APC (E1-0220). The location of the *MUTYH* c.536A>G (p.Tyr179Cys) and c.1187G>A (p.Gly396Asp) mutation-specific probes at 188 nt and 193 nt, respectively, are indicated.

**This lot was certified by MRC Holland on 27 July 2020.**

This certificate is a declaration of analysis at the time of the manufacturing process. All assays were run in compliance with manufacturer's instructions for use.

#### Implemented changes in the COA

Version 02 – 22 July 2021 (6)

- COA restructured and adapted to a new template.
- Various minor textual or layout changes.

Version 01 – 27 July 2020 (04)

- Not applicable, new document.